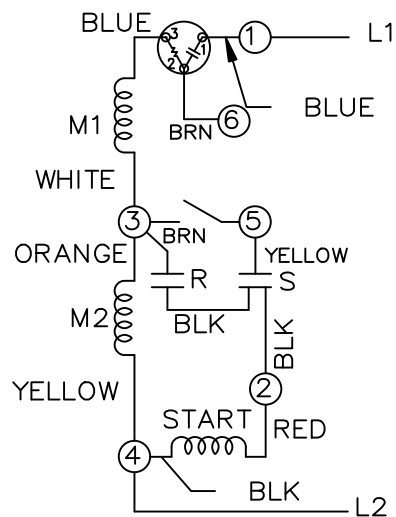


HIGH VOLTAGE C.C.W.

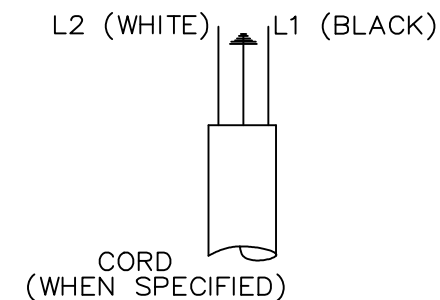
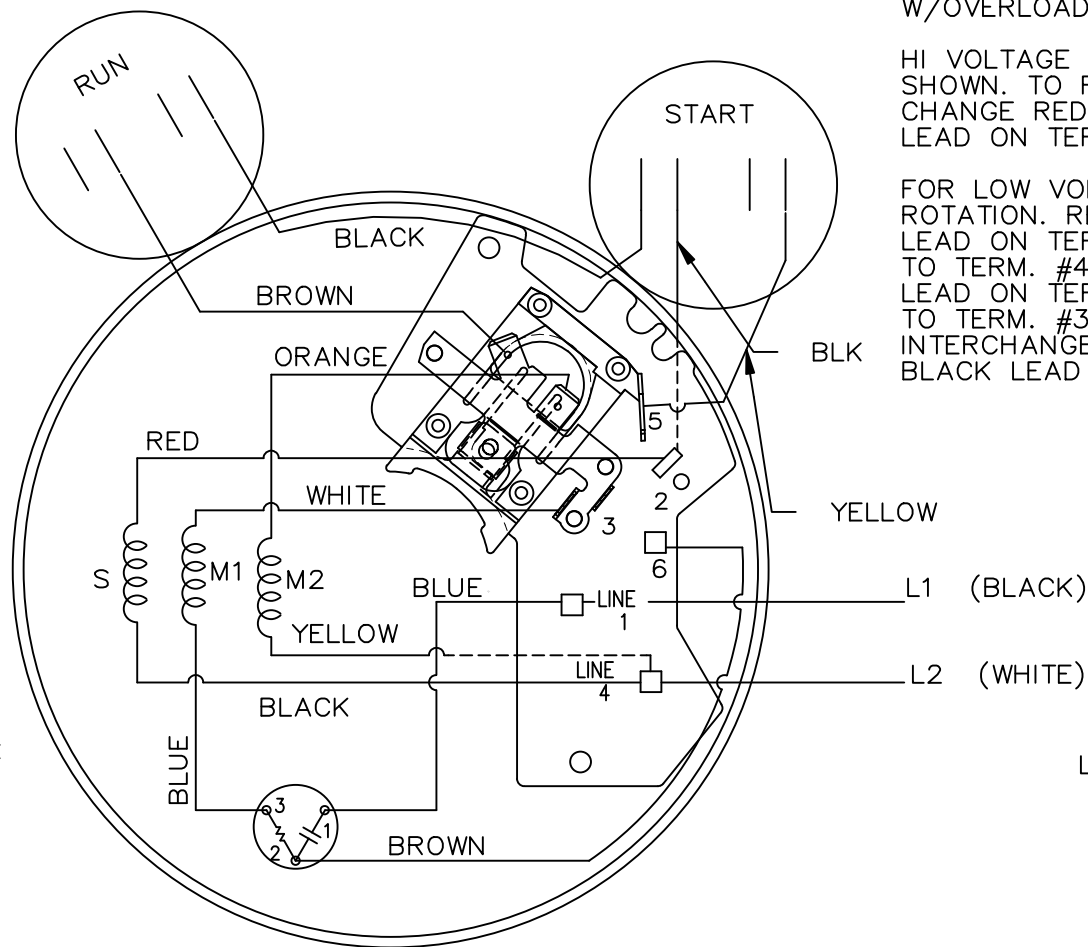
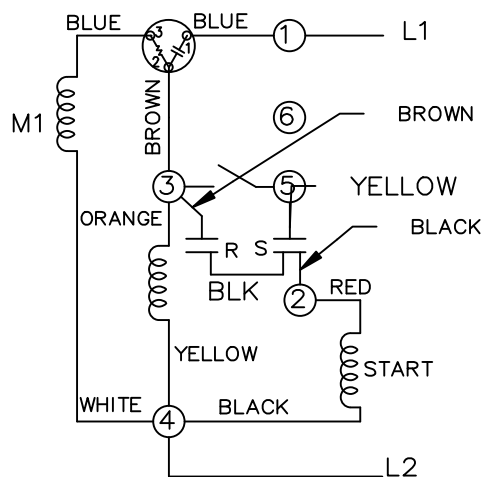



DUAL VOLTAGE CAPACITOR
START, CAPACITOR RUN
W/OVERLOAD AND SELECT ROTATION

HI VOLTAGE C.C.W. ROTATION
SHOWN. TO REVERSE INTER-
CHANGE RED WITH BLACK
LEAD ON TERMS. 2 & 4.

FOR LOW VOLTAGE C.C.W.
ROTATION. REMOVE WHITE
LEAD ON TERM. #3 & ATTACH
TO TERM. #4. REMOVE BROWN
LEAD ON TERM. #6 ATTACH
TO TERM. #3. TO REVERSE
INTERCHANGE RED WITH
BLACK LEAD ON TERMS. 2 & 4.

LOW VOLTAGE C.C.W.



				TOLERANCES UNLESS SPECIFIED			DRAWN PGK 08-26-1996
				DEC.	INCHES		
				.X	±.1	TITLE CONNECTION DIAGRAM	CHK ML 09-05-1996
				.XX	±.02		APPD GK 09-05-1996
7	UPDATED PER IS11-3490	PN 8/31/2011	VC	.XXX	±.005		SCALE 5=8
6	REDRAWN ON CADD	PGK 09-05-1996		.XXXX	±.0005	MAT'L.	REF
NO.	REVISION	BY & DATE	CHK	ANG	±7'30"	FINISH	FMF
				RFP		CAD FILE 102006_3	PREV
				DIST WP			
							SIZE A
							DRAWING NO. 102006-2
							PAGE OF 7
							REV. 7

THIS DRAWING IN DESIGN AND DETAIL IS OUR PROPERTY AND MUST NOT BE USED EXCEPT
IN CONNECTION WITH OUR WORK ALL RIGHTS OF DESIGN AND INVENTION ARE RESERVED
THIS IS AN ELECTRONICALLY GENERATED DOCUMENT - DO NOT SCALE THIS PRINT

7/31/2011 12:18:28 PM